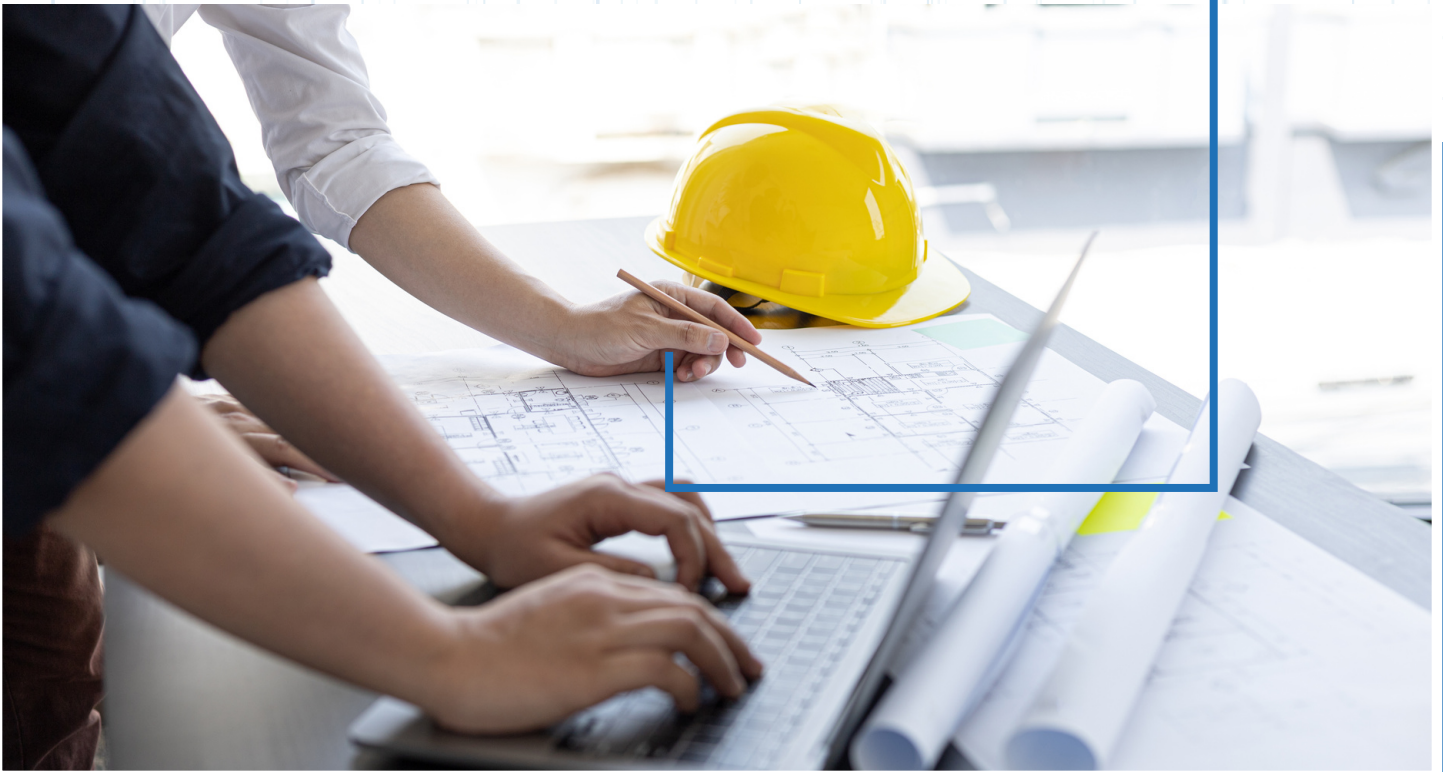


ARCHITECTS & ENGINEER SUBMITTAL SHEET

42" PTAC Subbase



GENUINE COMFORT
DELIVERING COMFORT CONSISTENTLY

PTAC Subbase

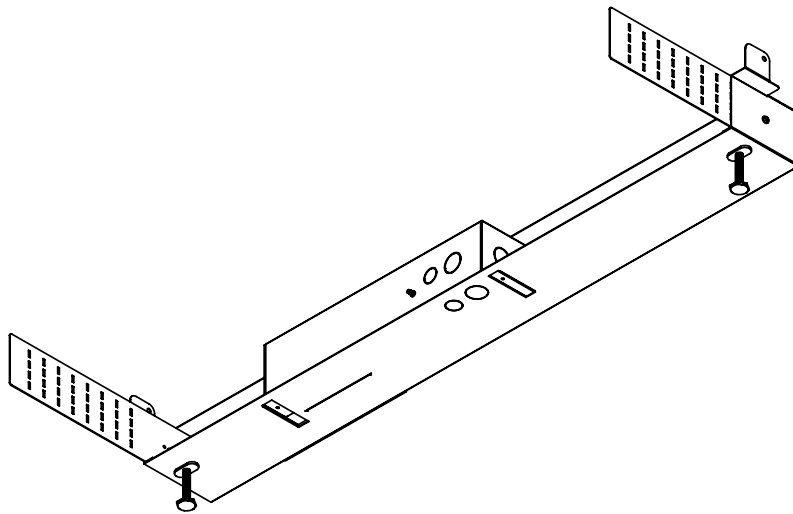
Job Name:		Engineer:	
Pruchaser:		Architect:	
Unit No.:		Contractor:	
Schedule:		Submitted to:	
Location:		Submitted by:	
Comment:		Date Submitted:	

SUBMITTAL SHEET

Genuine Comfort 42" PTAC subbase

Unit Size: 42.32"W x 4.72"H x 3.23"D

Model:GC-01SB-E - 42" PTAC subbase



Subbase parts list

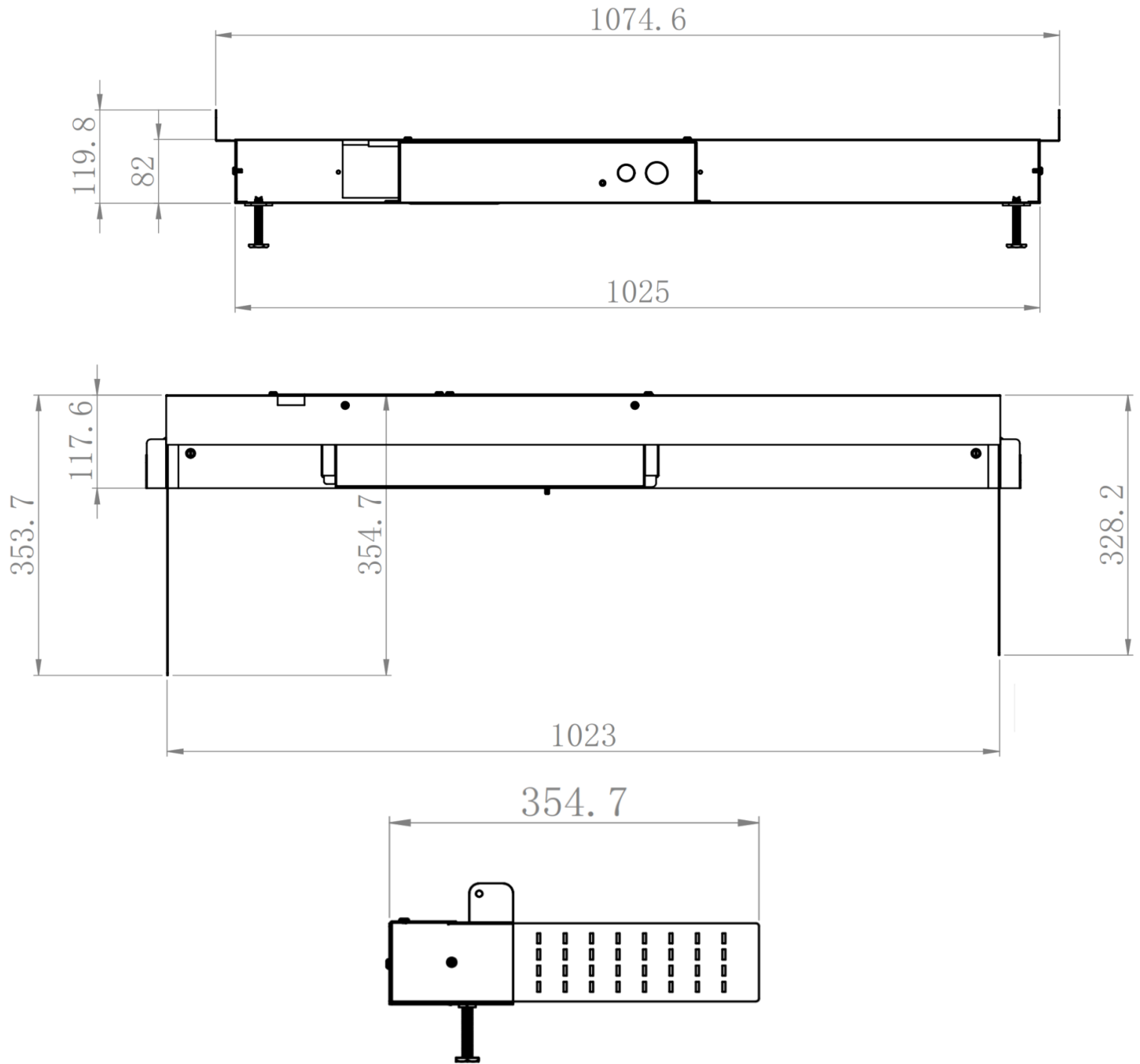
CHART 1	
Package Dimension (mm)	1100 x 142 x 135
Gross Weight (kg)	3.7
Material	SPCC
Color	Black

1		X1			
2		X1	6		X2
3		X1	7		X1
4		M8*38 X2	8		M5*10 X6
5		M5*12 X1	9		M5*16 X2

Match Subbase with required receptacle size (sold separately)

SR-15A	15A/250V UL approved receptacle, with stainless cover and bottom box
SR-20A	20A/250V UL approved receptacle, with stainless cover and bottom box
SR-30A	30A/250V UL approved receptacle, with stainless cover and bottom box

DIMENSION DIAGRAMS



Installation Instructions

GENERAL

The PTAC accessory subbase must be used whenever the packaged terminal air conditioner (PTAC) or heat pump is installed in a wall less than 2 in. thick, or where wall sleeve extends 4 in. or more into room, or for additional support or leveling of air conditioner or heat pump. Wall sleeve must be 3-1/4 in. minimum into room and 3-1/4 in. minimum to 4-1/2 in. maximum above floor.

NOTE: If electrical connections are required, electrical accessory kit can be ordered separately.

INSTALLATION

To properly install the subbase, follow these simple instructions:

Step 1 — Prepare wall sleeve. Drill one 1/8 in. hole on each side of wall sleeve. Drilling can be done through the plastic from inside if desired. See Fig. 1.

NOTE: If installing metal sleeve, mark location of holes on sleeve then drill 1/8-in. holes. See Fig. 2 for hole location dimensions on wall sleeve.

Step 2 (Optional) — Adjustable Side Extension Panels can be attached to cover open space left between subbase and wall. Determine the distance from inside wall to front of wall sleeve. See Fig. 3, dimension X.

Step 3 — Attach Side Extension Panels to subbase using 1 black screw on each side so that panel end extends dimension X plus 2 in. from front of subbase. To adjust side panel, simply bend panel at slot position. See Fig. 1.

Step 4 — Attach subbase to wall sleeve. Subbase has side tabs for mounting the subbase to the sleeve. Be sure hole on side tab is lined up with locator hole on side of sleeve. Once holes are aligned, attach subbase to sleeve with (1) one black screw on each side. Do not overtighten. See Fig. 1 and 3.

Step 5 — Level subbase flush with floor by adjusting leveling bolts beneath each end of subbase. See Fig. 4 for completed subbase assembly.

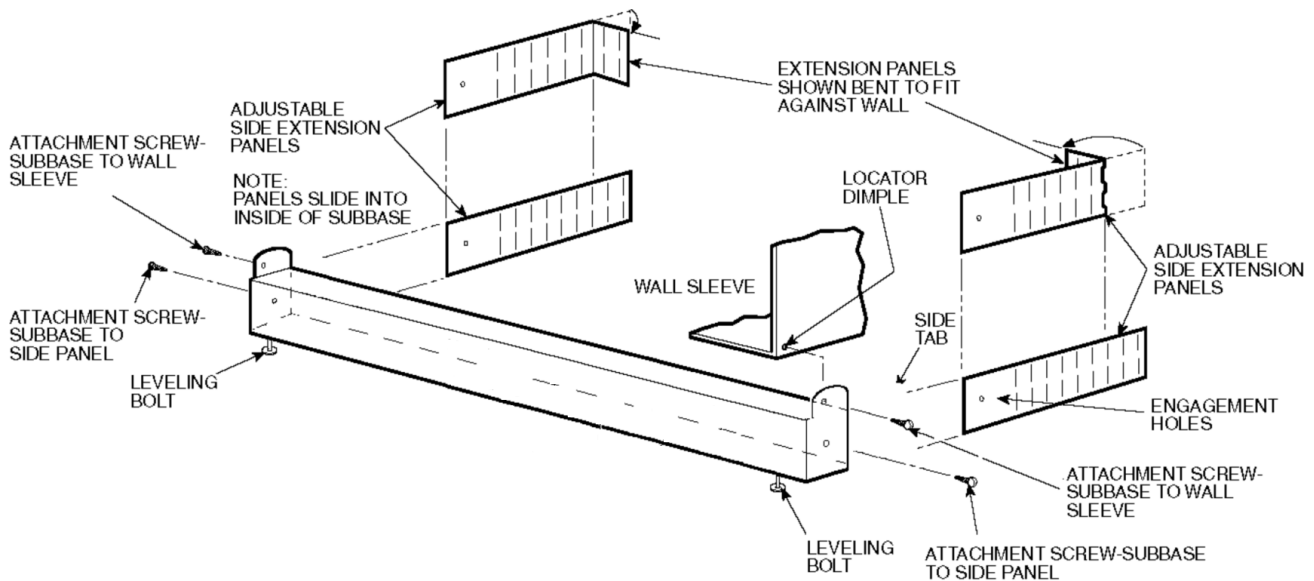


Fig. 1

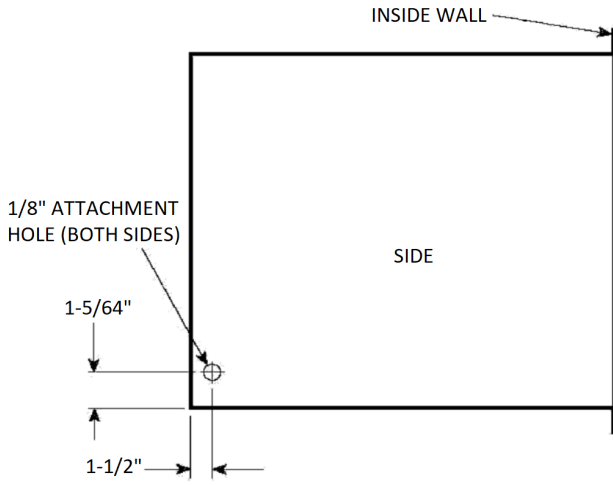


Fig. 2

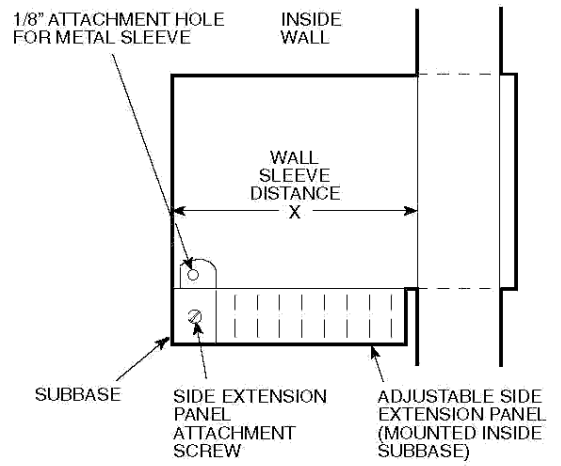


Fig. 3 - Attaching Adjustable Side Extensions to Subbase

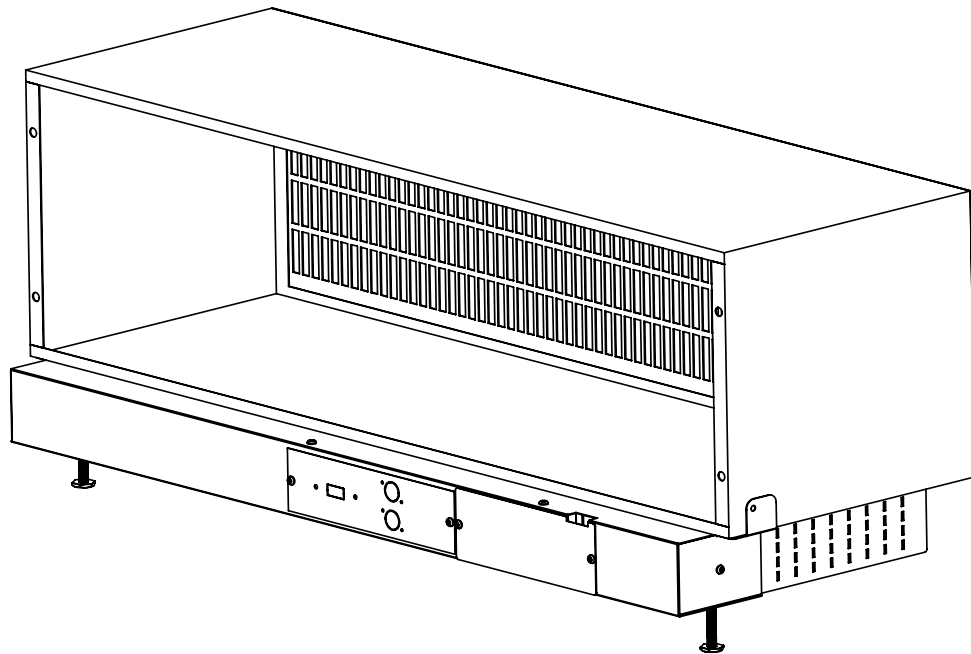


Fig. 4