

# Spec Sheet

## Genuine Comfort 26" Thru-The-Wall PTAC/PTHP

Unit Size: 26"W x 15-3/4"H

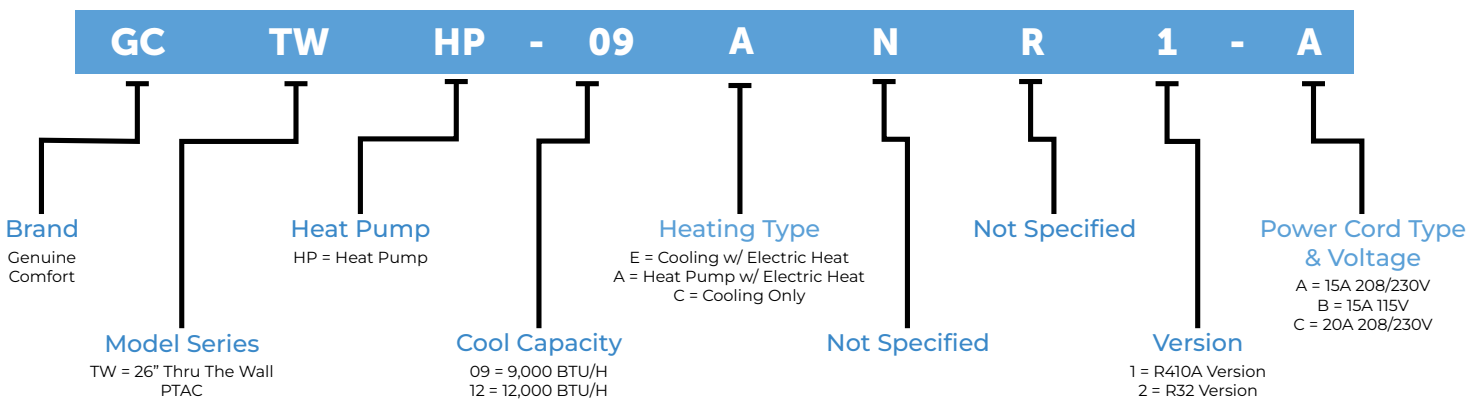
### FEATURES

- Digital controls
- Slide-Out Washable & Easy-Clean Filter
- Adjustable Air Louvres
- 2 Indoor Fan Speeds
- Hand Held Remote Control (Not Included)
- Error Code Display for easy Diagnostic
- Dual Motors for Quiet & Efficient Operation
- 24 Volt Wall Thermostat Control Option
- Compressor Time Delay Protection and Efficiency
- R410a Refrigerant
- Genuine Care Warranty: 1 Year Unit Replacement (if parts and labour is not available), 6 Year Parts Replacement



### MODEL IDENTIFICATION

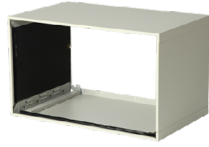
Example: **GCTWHP-09ANR1-A**



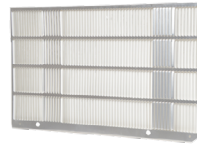
## ACCESSORIES \*SOLD SEPARATELY



HAND HELD  
REMOTE CONTROLLER



WALL SLEEVE



STAMPED GRILLE



ARCHITECTURAL  
GRILLE



WIRELESS + WIRED  
THERMOSTAT



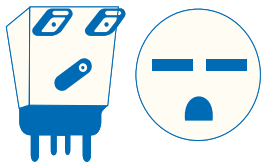
OCCUPANCY SENSOR  
THERMOSTAT



EMS THERMOSTAT

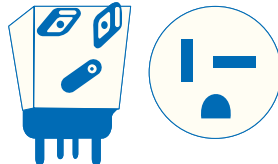
## PLUG TYPE

TANDEM



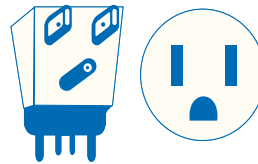
208V/230V 15A

PERPENDICULAR



208V/230V 20A

HORIZONTAL



15A/115V

## SPECIFICATIONS (COOLING WITH ELECTRIC HEAT)

Model ID			GCTW-09ENR1-A	GCTW-09ENR1-C	GCTW-12ENR1-A	GCTW-12ENR1-A
Power Supply	Voltage (1 Ph., 60Hz)	V	230/208V	230/208V	230/208V	230/208V
	Capacity	Btu/h	9400/9300	9400/9300	11800/11600	11800/11600
Cooling	Input	W	940/910	940/910	1185/1145	1185/1145
		EER	10.0/10.2	10.0/10.2	10.0/10.1	10.0/10.1
	Capacity	Btu/h	8500/6900	11772/9656	8500/6900	11772/9656
Electric Heater	Input	W	2550/2090	3450/2830	2550/2090	3450/2830
		A	11.1/10	15/13.6	11.1/10	15/13.6
Max Input Consumption		W	2565	3465	2565	3465
Max Current		A	11.30	15.2	11.30	15.2
Indoor Air Flow (L/M/H)		CFM	182 / 235 / 270	182 / 235 / 270	182 / 235 / 270	182 / 235 / 270
Outdoor Fresh Air		CFM	24	24	24	24
Indoor Sound Level (L/M/H)		dB(a)	55 / 58 / 60	55 / 58 / 60	55 / 58 / 60	55 / 58 / 60
Outdoor Sound Level (L/M/H)		dB(a)	67	67	67	67
Unit Dimensions (W x H x D)		inch	26 x 15.6 x 21.57	26 x 15.6 x 21.57	26 x 15.6 x 21.57	26 x 15.6 x 21.57
Package Dimension (W x D x H)		inch	30.12 x 18.9 x 24.8	30.12 x 18.9 x 24.8	30.12 x 18.9 x 24.8	30.12 x 18.9 x 24.8
Net/Gross Weight		lbs.	83/93	83/93	84 / 94	84 / 94
Refrigerant Type			R410A	R410A	R410A	R410A
Operation Temperature (Indoor)		C	16 - 32	16 - 32	16 - 32	16 - 32
		F	60 - 90	60 - 90	60 - 90	60 - 90
Ambient Temperature (Outdoor)		C	16-46	16-46	16-46	16-46
		F	60.8-114.8	60.8-114.8	60.8-114.8	60.8-114.8
Cord Type			LCDI-15A	LCDI-20A	LCDI-15A	LCDI-20A
Cord Length		Ft.	6.5	6.5	6.5	6.5

## SPECIFICATIONS (HEAT PUMP WITH ELECTRIC HEAT)

Model ID			GCTWHP-09ANR1-B	GCTWHP-09ANR1-A	GCTWHP-09ANR1-C
Power Supply	Voltage (1 Ph., 60Hz)	V	115V	230/208V	230/208V
	Capacity	Btu/h	9000	9300/9100	9300/9100
Cooling	Input	W	920	940/910	940/910
		EER	9.8	9.9/10.0	9.9/10.0
	Capacity	Btu/h	8500	8800/8600	8800/8600
Heating	Input	W	805	830/810	830/810
		COP	3.1	3.1/ 3.1	3.1/ 3.1
	Capacity	Btu/h	4265/3517	8500/6900	11772/9656
Electric Heater	Input	W	1250/1031	2550/2090	3450/2830
		A	5.3/5	11.1/10	15/13.6
Max Input Consumption		W	1270	2565	3465
Max Current		A	11.45	11.30	15.2
Indoor Air Flow (L/M/H)		CFM	182 / 235 / 270	182 / 235 / 270	182 / 235 / 270
Outdoor Fresh Air		CFM	24	24	24
Indoor Sound Level (L/M/H)		dB(a)	55 / 57 / 59	55 / 58 / 60	55 / 58 / 60
Outdoor Sound Level (L/M/H)		dB(a)	67	67	67
Unit Dimensions (W x H x D)		inch	26 x 15.6 x 21.57	26 x 15.6 x 21.57	26 x 15.6 x 21.57
Package Dimension (W x D x H)		inch	30.12 x 18.9 x 24.8	30.12 x 18.9 x 24.8	30.12 x 18.9 x 24.8
Net/Gross Weight		lbs.	84/94	84/94	84/94
Refrigerant Type			R410A	R410A	R410A
Operation Temperature (Indoor)		C	16 - 32	16 - 32	16 - 32
		F	60 - 90	60 - 90	60 - 90
Ambient Temperature (Outdoor)		C (Cooling)	16-46	16-46	16-46
		F (Cooling)	60.8-114.8	60.8-114.8	60.8-114.8
		C (Heating)	5-24	5-24	5-24
		F (Heating)	41-75.2	41-75.2	41-75.2
Cord Type			LCDI-15A	LCDI-15A	LCDI-20A
Cord Length		Ft.	6.5	6.5	6.5

## SPECIFICATIONS (HEAT PUMP WITH ELECTRIC HEAT) (CONTINUED)

Model ID			GCTWHP-12ANR1-A	GCTWHP-09ANR1-A
Power Supply	Voltage (1 Ph., 60Hz)	V	230/208V	230/208V
	Capacity	Btu/h	11700/11500	11700/11500
Cooling	Input	W	1220/1200	1220/1200
		EER	9.6/9.6	9.6/9.6
	Capacity	Btu/h	11400/11200	11400/11200
Heating	Input	W	1160/1140	1160/1140
		COP	2.9/2.9	2.9/2.9
	Capacity	Btu/h	8500/6900	11772/9656
Electric Heater	Input	W	2550/2090	3450/2830
		A	11.1/10	15/13.6
Max Input Consumption		W	2565	3465
Max Current		A	11.30	15.2
Indoor Air Flow (L/M/H)		CFM	182 / 235 / 270	182 / 235 / 270
Outdoor Fresh Air		CFM	24	24
Indoor Sound Level (L/M/H)		dB(a)	55 / 57 / 59	55 / 58 / 60
Outdoor Sound Level (L/M/H)		dB(a)	67	67
Unit Dimensions (W x H x D)		inch	26 x 15.6 x 21.57	26 x 15.6 x 21.57
Package Dimension (W x D x H)		inch	30.12 x 18.9 x 24.8	30.12 x 18.9 x 24.8
Net/Gross Weight		lbs.	97/110	97/110
Refrigerant Type			R410A	R410A
Operation Temperature (Indoor)		C	16 - 32	16 - 32
		F	60 - 90	60 - 90
Ambient Temperature (Outdoor)		C (Cooling)	16-46	16-46
		F (Cooling)	60.8-114.8	60.8-114.8
		C (Heating)	5-24	5-24
		F (Heating)	41-75.2	41-75.2
Cord Type			LCDI-15A	LCDI-20A
Cord Length		Ft.	6.5	6.5

## SPECIFICATIONS (COOLING ONLY)

Model ID		GCTW-09CBR1-B	GCTW-12CBR1-B	GCTW-12CNR1-B	
Power Supply	Voltage (1 Ph., 60Hz)	V	115V	115V	230/208V
	Capacity	Btu/h	9000	11800	11800/11600
Cooling	Input	W	920	1200	1185/1145
		EER	9.8	9.8	10.0/10.1
Max Input Consumption		W	1178	1423	1465
Max Current		A	11.5	15.63	8.1
Indoor Air Flow (L/M/H)		CFM	194 / 253 / 288	194 / 253 / 288	194 / 253 / 288
Outdoor Fresh Air		CFM	24	24	24
Indoor Sound Level (L/M/H)		dB(a)	55 / 57 / 59	55 / 57 / 59	55 / 58 / 60
Outdoor Sound Level (L/M/H)		dB(a)	67	67	67
Unit Dimensions (W x H x D)		inch	26 x 15.6 x 21.57	26 x 15.6 x 21.57	26 x 15.6 x 21.57
Package Dimension (W x D x H)		inch	30.12 x 18.9 x 24.8	30.12 x 18.9 x 24.8	30.12 x 18.9 x 24.8
Net/Gross Weight		lbs.	80/90	84/94	82/92
Refrigerant Type			R410A	R410A	R410A
Operation Temperature (Indoor)		C	16 - 32	16 - 32	16 - 32
		F	60 - 90	60 - 90	60 - 90
Ambient Temperature (Outdoor)		C	16-46	16-46	16-46
		F	60.8-114.8	60.8-114.8	60.8-114.8
Cord Type			LCDI-15A	LCDI-15A	LCDI-15A
Cord Length		Ft.	6.5	6.5	6.5

Manufacturer reserves the right to change specifications. Our products are subject to continuous improvements. Genuine Comfort reserves the right to modify product design and specifications, discontinue design without notice and without incurring any obligations.